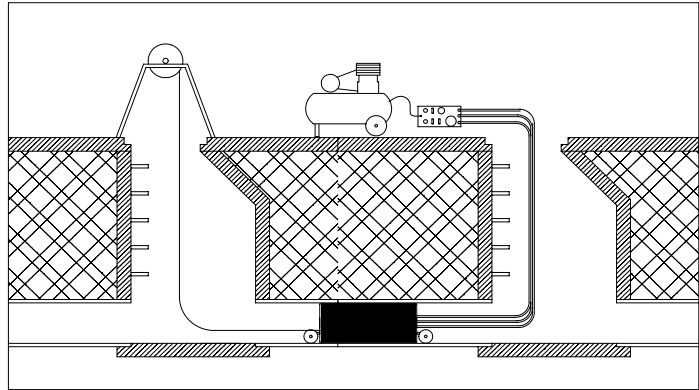
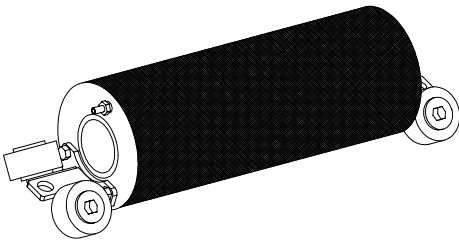


Short Liner Carriers

The Short Liner Carrier is designed to carry cured in place patches down a sewer line and be inflated over a damaged area. Some styles have bypasses through the center of the plug to bypass sewage during installation of a patch. The rubber sleeve of these carriers is repairable and replaceable. Lengths vary from 36" to 96" depending on type.



Nominal Size	Product Code	Pipe Use Range		Plug Diameter (Inches)	Plug Length (Inches)	Bypass Size (inches)	Shipping Weight
		Minimum Pipe Diameter (inches)	Minimum Pipe Diameter (inches)				
6"	83930	6	6	5.0	36.0	3	18
8"	83931	8	8	6.3	36.0	4	21
10"	83932	10	10	8.3	36.0	5	29
12"	83933	12	12	10.5	36.0	6	34
15"	83934	15	15	12.5	36.0	8	62
8-10"	83935	8	10	6.3	36.0	3	22
12-15"	83936	12	15	8.3	36.0	3	34
15-21"	83937	15	21	12.5	36.0	3	60
8-10"	83938	8	10	6.3	72.0	3	31
12-15"	83939	12	15	10.5	72	3	46
15-21"	83940	15	21	12.5	72	3	48
8-10"	83941	8	10	6.3	96	3	41
12-15"	83942	12	15	10.5	96	3	57
15-21"	83943	15	21	12.5	96	3	91