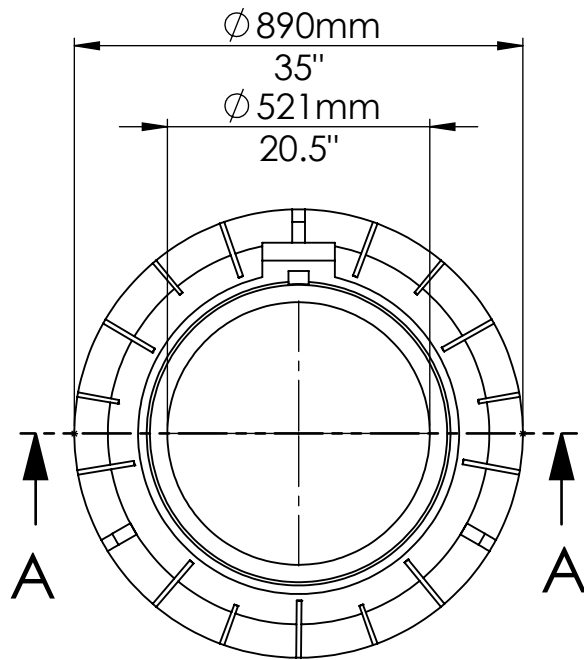
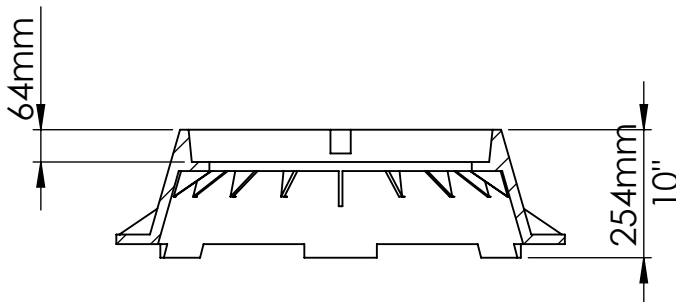


MATERIAL:

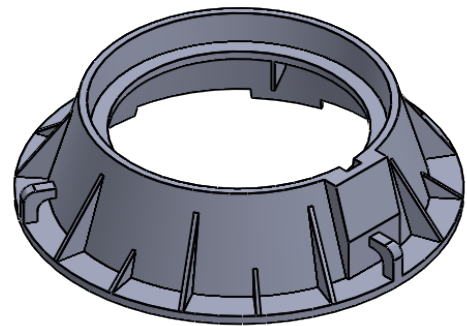
GRAY CAST IRON TO ASTM A48
CLASS 30B



TOP VIEW




SECTION A-A
SCALE 1 : 15



ISOMETRIC VIEW

NOTE:

- 1) CONFORMS TO CITY OF WINNIPEG AP-004.
- 2) WEIGHT 103kgs. (227 lbs.)

					NAME	DATE			
				DRAWN	AS	MAY 28/18			
				CHECKED					
				DIMENSIONS ARE IN INCHES TOLERANCES: FRACTIONAL ± ANGULAR: MACH ± BEND ± TWO PLACE DECIMAL ± THREE PLACE DECIMAL ±					
DO NOT SCALE DRAWING									
	Description			SCALE1:15	SHEET 1 OF 1		SIZE A	DWG. NO. WD50F	REV.