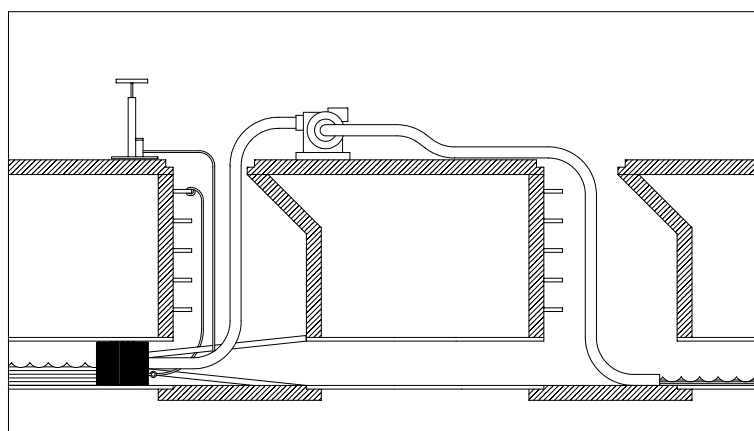


# Single Size Pneumatic Bypass Plugs

The Single Size Pneumatic Bypass Plug is designed for the bypassing of water or sewage in pipelines or to temporarily stop the flow. It can also be adapted to use in air testing of sewer lines. Each plug is designed for one pipe size. These plugs can be used in a variety of applications and are suitable for many different pipe materials. Manufactured from a durable natural rubber compound these plugs are flexible yet rugged. Sizes 1 1/2" through 6" come with 12" chain and ring assembly attached to a molded inflation valve. Sizes 8" through 15" come with an eyebolt for connecting a rope or inflation/lift line and a 1/4" NPT replaceable inflation valve.



Nominal Size	Product Code	Pipe Use Range		Plug Diameter (inches)	Plug Length (inches)	Overall Plug Length (inches)	Bypass Size (inches)	Inflation Pressure	Maximum Back Pressure		Shipping Weight
		Minimum Pipe Diameter (inches)	Maximum Pipe Diameter (inches)						Water Head (feet)	Air (psig)	
1 1/2"	83671	1.40	1.75	1.38	2.25	4.25	1/8	40	50	21	0.4
2"	83672	1.90	2.25	1.85	4.63	6.38	1/8	40	50	21	0.6
3"	83673	2.65	3.25	2.56	6.50	8.00	3/4	40	50	21	1.1
4"	83674	3.15	4.25	3.00	6.50	8.00	3/4	35	30	13	1.4
5"	83675	4.46	5.25	4.25	7.00	9.00	3/4	35	30	13	3.5
6"	83676	5.51	6.25	5.25	7.25	11.75	1 1/2	35	30	13	3.5
8"	83678	7.09	8.25	6.75	9.50	14.75	3	35	30	13	7.0
10"	83680	8.92	10.25	8.50	11.50	17.25	3	35	30	13	10.5
12"	83682	11.02	12.25	10.50	13.75	19.50	3	35	30	13	13.5
15"	83685	13.39	16.25	12.75	18.00	24.50	4	30	30	13	31.8