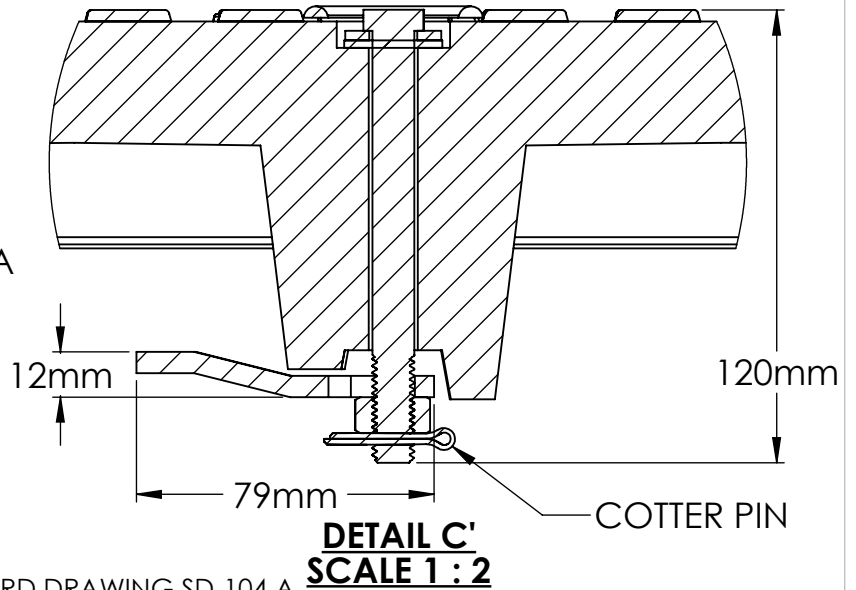
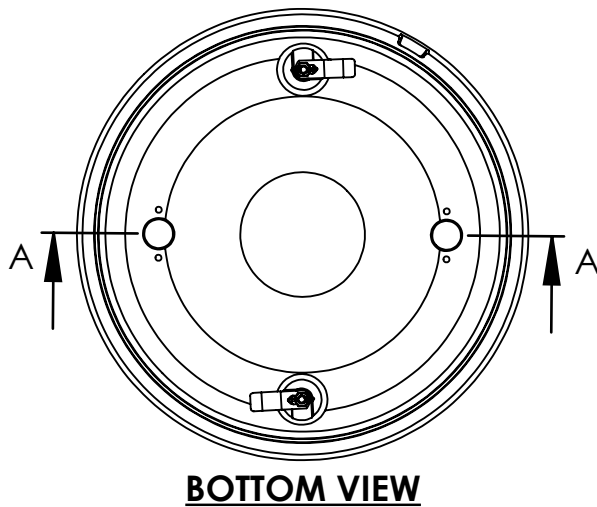
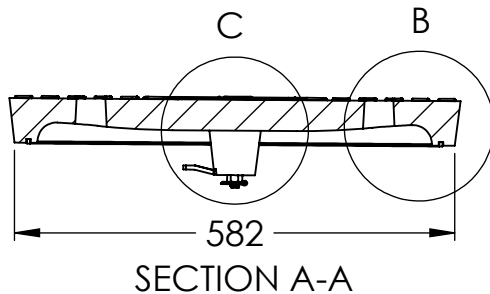
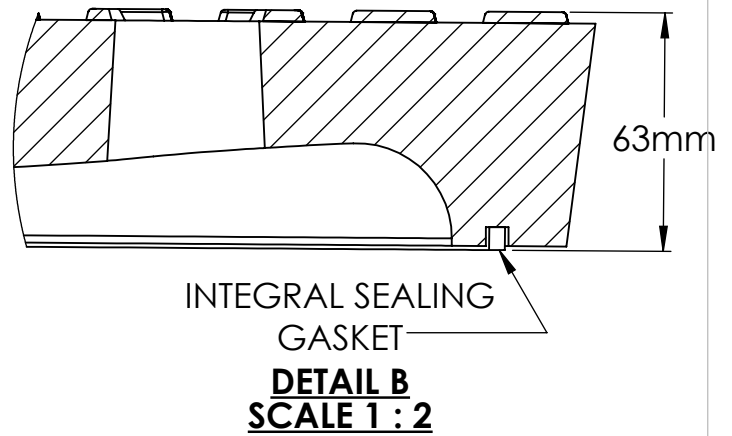
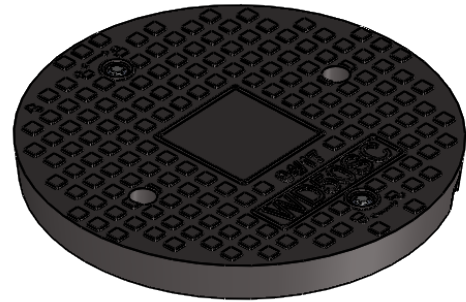
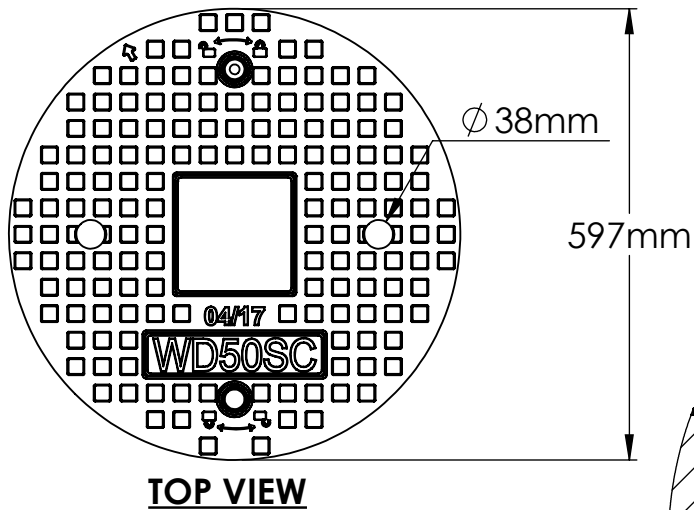



MATERIAL: COMPOSITE  
LOCK MATERIAL: 304SS



**NOTE:**

- 1) CONFORMS TO CITY OF WINNIPEG STANDARD DRAWING SD-104 A.
- 2) WEIGHT 23.5kgs. (52lbs.)
- 3) COMPOSITE COVER FITS BOTH CITY OF WINNIPEG CAST IRON AND COMPOSITE FRAMES

					NAME	DATE			
				DRAWN	AS	JULY 11/17			
				CHECKED					
				DIMENSIONS ARE IN INCHES TOLERANCES: FRACTIONAL ± ANGULAR: MACH ± BEND ± TWO PLACE DECIMAL ± THREE PLACE DECIMAL ±					
DO NOT SCALE DRAWING				SCALE:1:10		SHEET 1 OF 1	SIZE	DWG. NO.	REV.
Description							A	WD50SC COMPOSITE SOLID COVER	