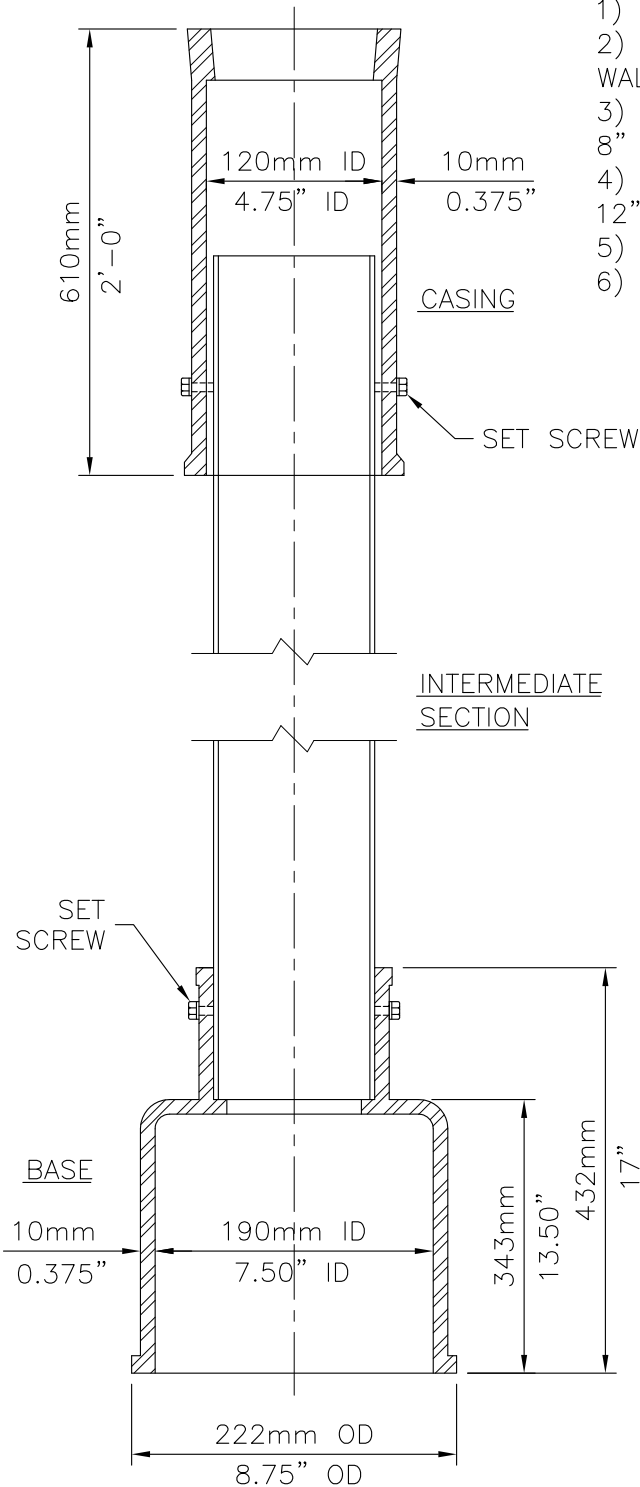
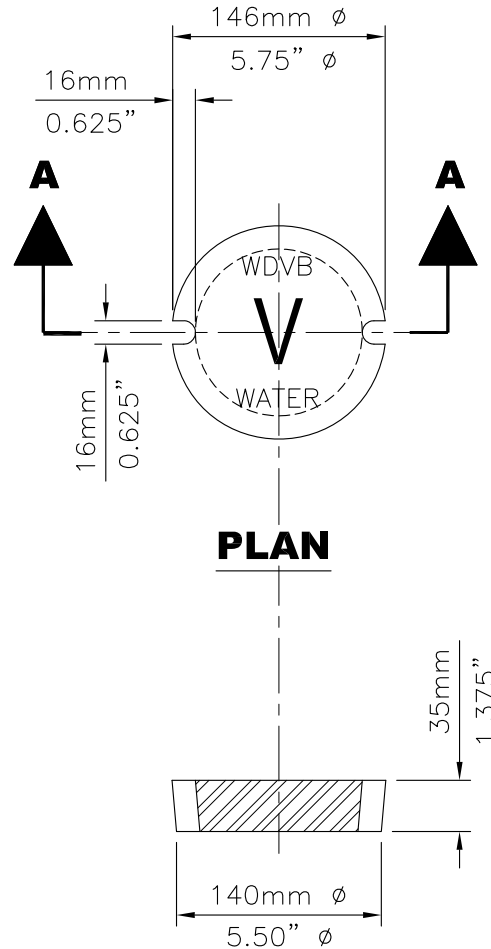


MATERIAL:

- 1) WD64 TYPE 'C' CASING – GRAY CAST IRON
- 2) INTERMEDIATE SECTION – STEEL 4.5" OD (114mm). WALL THICKNESS 1/8" (3.2mm). LENGTH TO SUIT.
- 3) WD65 TYPE 'C' SMALL BASE – GREY CAST IRON 4" TO 8" (100 TO 200mm)
- 4) WD67 TYPE 'C' LARGE BASE – GREY CAST IRON 10" & 12" (250 & 300mm).
- 5) SET SCREWS – 3/8" (10mm)
- 6) SPINDLES – SEE DWGS. VBS-2 & VBS-3.



**SECTION A-A**



**WD66 COVER - SECTION A-A**

**TYPE 'C'  
VALVE BOX**



Valve Boxes Ltd.  
1036 Waverley Street  
Winnipeg Manitoba Canada R3T 0P3  
P 204 896 1333 F 204 896 6969

APP'D BY: <b>WDP</b>	DATE: <b>08/06/02</b>
SCALE: <b>N.T.S.</b>	REV. NO: <b>00</b>

DWG. NO:  
**VB-5**