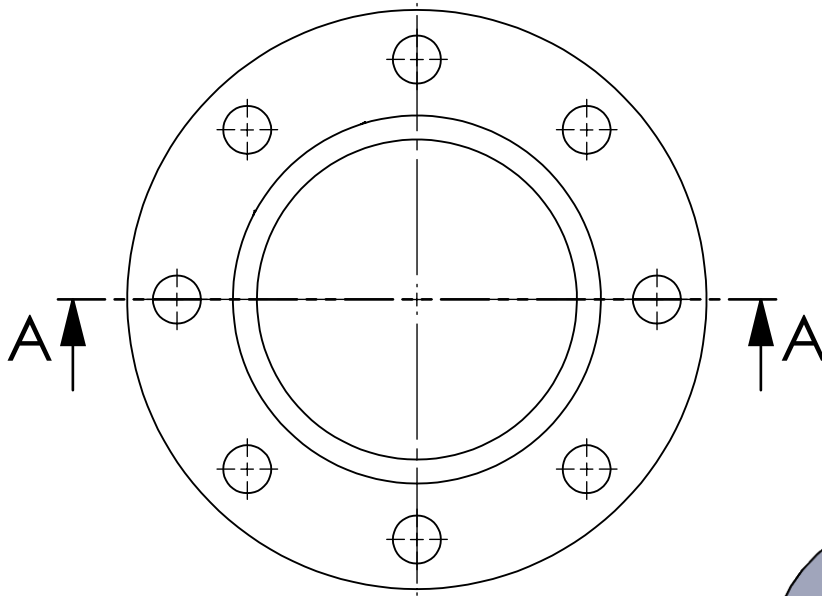
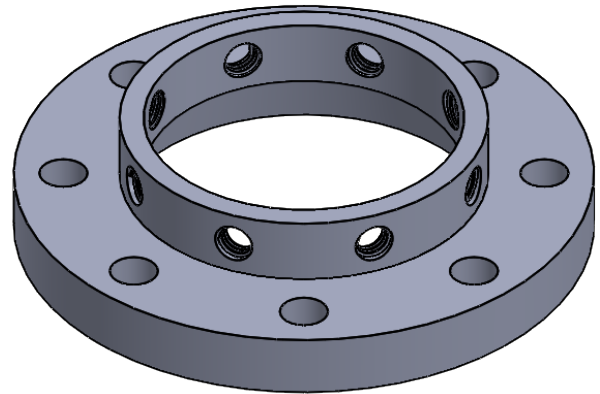
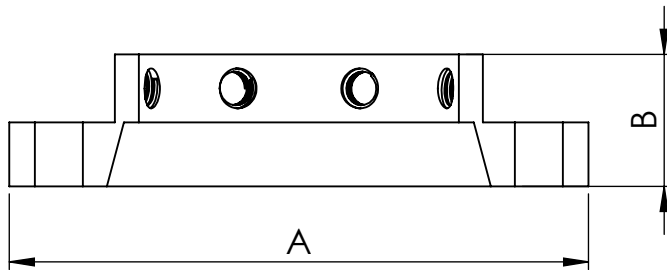



MATERIAL:

CASTING - DUCTILE IRON ASTM
A536 GR. 65-45-12

**TOP VIEW****ISOMETRIC VIEW****SECTION A-A****SCALE 1 : 3**

NOM. PIPE SIZE	STL. PIPE O.D. 400S	C.I. PIPE O.D. 400C	A	B	BOLT CIRCLE	BOLT HOLE	SET SCREWS	APPROX. WT. LBS.
4	4.500"	4.80"	9"	2.0625"	7.50"	0.75"	8 - 0.625" x 2"	11
6	6.625"	6.90"	11"	2.125"	9.50"	0.875"	8 - 0.625" x 2"	14
8	8.625"	9.05"	13.5"	11.75"	11.75"	0.875"	8 - 0.625" x 2"	21
10	10.750"	11.10"	NOT AVAILABLE AT PRESENT					
12	12.750"	13.20"	NOT AVAILABLE AT PRESENT					

					NAME	DATE				
				DRAWN	AS	JULY 23/18				
				CHECKED						
				DIMENSIONS ARE IN INCHES TOLERANCES: FRACTIONAL ± ANGULAR: MACH ± BEND ± TWO PLACE DECIMAL ± THREE PLACE DECIMAL ±						
DO NOT SCALE DRAWING							SIZE	DWG. NO.		REV.
	Description			SCALE1:3		SHEET 1 OF 1		A WD Flange Series 400		