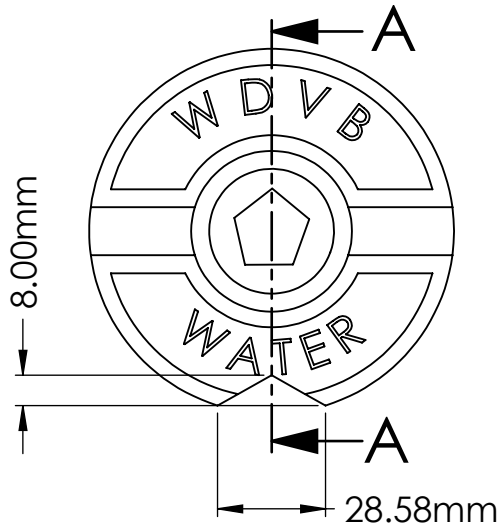
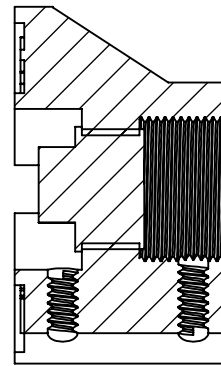


MATERIAL:

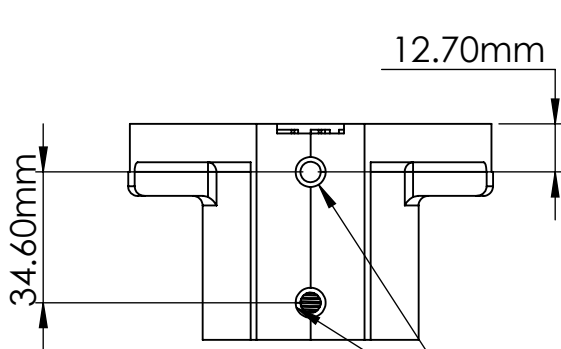
- 1) CASTING - DUCTILE IRON ASTM A536 GR. 65-45-12 OR
GRAY CAST IRON ASTM A48 GR.30B
2) WD55 BRASS PLUG - ASTM B62 SEE DWG. SBP-1



TOP VIEW

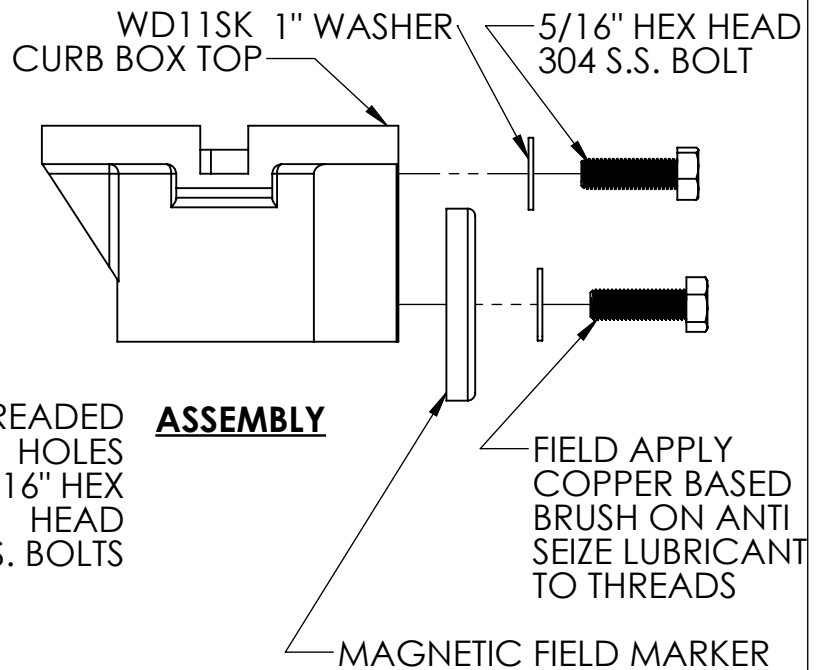


SECTION A-A




FRONT VIEW

2 - THREADED HOLES
FOR 5/16" HEX
HEAD
304 S.S. BOLTS



ASSEMBLY

					NAME	DATE			
				DRAWN	AS	JULY 23/18			
				CHECKED					
				DIMENSIONS ARE IN INCHES TOLERANCES: FRACTIONAL ± ANGULAR: MACH ± BEND ± TWO PLACE DECIMAL ± THREE PLACE DECIMAL ±					
DO NOT SCALE DRAWING									
	Description			SCALE:1:2	SHEET 1 OF 1		SIZE	DWG. NO.	REV.
							A	WD11S - SK	