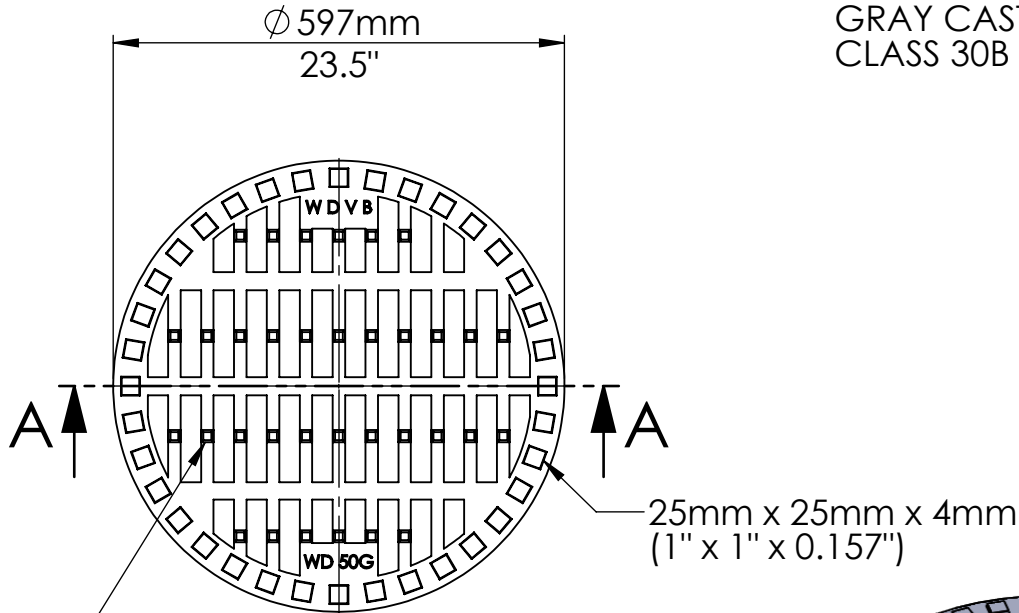
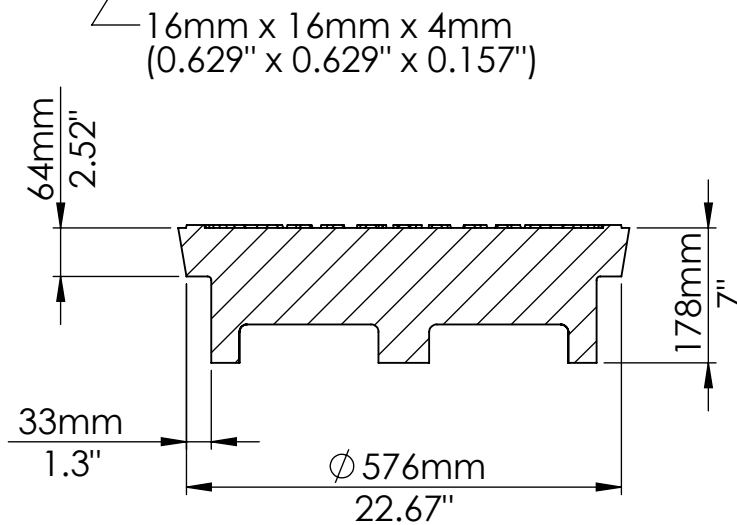


MATERIAL

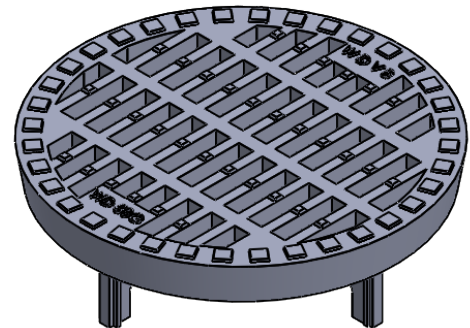
GRAY CAST IRON TO ASTM A48
CLASS 30B



TOP VIEW




SECTION A-A
SCALE 1 : 10



ISOMETRIC VIEW

NOTES:

- 1) CONFORMS TO CITY OF WINNIPEG STANDARD DRAWING SD-106A
- 2) WEIGHT 35kgs. (159lbs.)

					NAME	DATE			
				DRAWN	AS	MAY 28/18			
				CHECKED					
				DIMENSIONS ARE IN INCHES TOLERANCES: FRACTIONAL ± ANGULAR: MACH ± BEND ± TWO PLACE DECIMAL ± THREE PLACE DECIMAL ±					
DO NOT SCALE DRAWING							SIZE	DWG. NO.	REV.
	Description			SCALE1:10	SHEET 1 OF 1	A	WD50G		