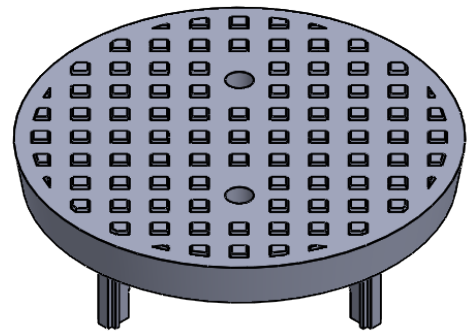
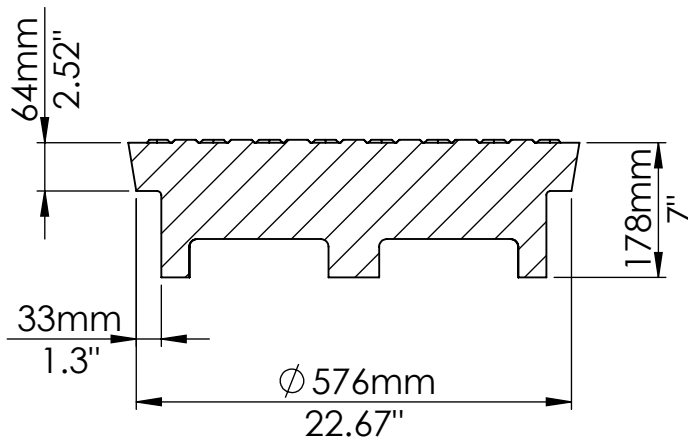
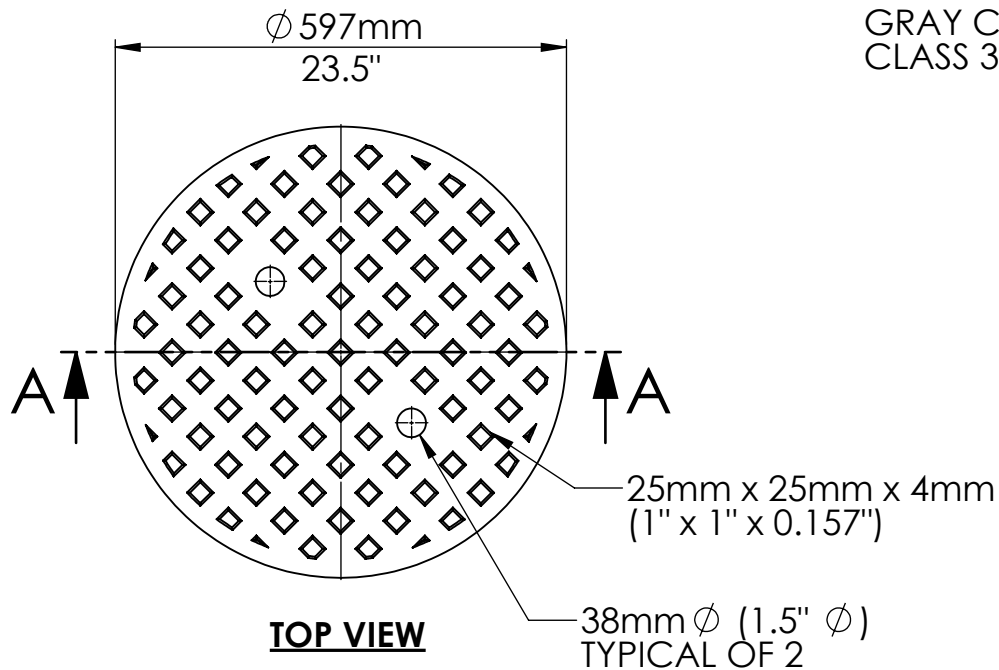



MATERIAL:

GRAY CAST IRON TO ASTM A48
CLASS 30B



NOTE:

- 1) CONFORMS TO CITY OF WINNIPEG AP-005.
- 2) WEIGHT 37 kgs. (168lbs.)

					NAME	DATE			
				DRAWN	AS	MAY 28/18			
				CHECKED					
				DIMENSIONS ARE IN INCHES TOLERANCES: FRACTIONAL ± ANGULAR: MACH ± BEND ± TWO PLACE DECIMAL ± THREE PLACE DECIMAL ±					
DO NOT SCALE DRAWING							SIZE	DWG. NO.	REV.
	Description			SCALE1:10	SHEET 1 OF 1		A	WD50S	